



East Alameda County Regional Conservation Strategy: A Blueprint for Action

Users Advisory Group

May 15, 2008



Meeting Objectives

- Discuss UAG ground rules
- Discuss Steering Committee recommendations on the land cover classification and focal species list
- Discuss Santa Rosa Plain Conservation Strategy
- Future meeting topics
- Future meeting schedule



Steering Committee Members

- Funding partners include local agencies that are subject to mitigation requirements
 - Zone 7, Alameda County, RCD/NRCS, ACCMA, EBRPD, AC Waste Management Authority, and Cities of Dublin, Livermore and Pleasanton.
- Wildlife agencies: USFWS and DFG
- SF Bay Regional Water Quality Control Board



Steering Committee Role

- Develop a conservation strategy for East Alameda County that will streamline environmental permitting processes by:
 - Documenting important biological resources in East Alameda County
 - Setting priorities for mitigation and conservation
 - Developing clear standards
 - Setting mitigation ratios



Steering Committee (cont)

- Draft work products are developed at the Steering Committee level
 - ICF Jones & Stokes develops draft work products under guidance of the Steering Committee
 - Steering committee members have their respective in-house technical staff reviewing the draft work products



Users Advisory Group Role

- Technical & non-technical representatives from entities that intend to use the strategy
 - Assist in the development of the EACCS
 - Bringing in additional information, new ideas, technology, and perspectives
 - Provide feedback to Steering Committee on data and strategy proposals
 - Serve as conduit to your constituencies



Users Advisory Group (cont)

- Duties include:
 - Regular meeting attendance
 - Providing comments/recommendations on draft work products developed at the Steering Committee level
 - Make sure respective constituencies remains informed about the strategy



Ad Hoc Technical Working Group

- As needed, the Steering Committee may form Ad Hoc Technical Working Group(s) to:
 - Coordinate information/data exchange and technical work
 - Review and discuss work products and potential issues
- Technical working groups would be comprised of technical representatives from the UAG and Steering Committee, and other outside sources



Comments Received

- Comments received from UAG are reviewed and discussed by the Steering Committee
- Steering Committee will consider UAG recommendations and incorporate them, as appropriate
- Steering Committee will follow-up with UAG on any outstanding issues



EACCS Coordinator

- Coordinate meetings & distribute associated meeting materials
- Maintain library of work products & correspondence
- Can answer procedural questions
- Relay any comments or questions to Steering Committee



Questions?



Species Selection Process

■ Selection Criteria

- Range – is the species in the study area?
- Status – is the species listed or expected to be listed by state or feds?
- Threats – what are they and can they be mitigated?
- Data – is the species well understood?

■ Other Criteria

- Are there conservation opportunities?
- Are there accepted mitigation practices for the species?
- Is the species included in other conservation plans in the region?



Comments



Land Cover Types

Land cover types added

- Alkali meadow (alkali scald)
- Desert olive scrub
- Sargent cypress woodland
- Valley sink scrub

Land cover types addressed in other ways

- Vernal pools
- Native grasslands



Comments on Wildlife

- Prairie falcon
- Red shouldered hawk
- Lewis's woodpecker
- Say's phoebe
- Yellow-billed magpie
- Wood duck
- Western bluebird
- Willow flycatcher
- Black-throated gray warbler
- Blue grosbeak
- Song sparrow
- Other migratory bird species



Wildlife species added

- Foothill yellow-legged frog
- Callippe silverspot butterfly
- Central California Coast steelhead



Comments on plants

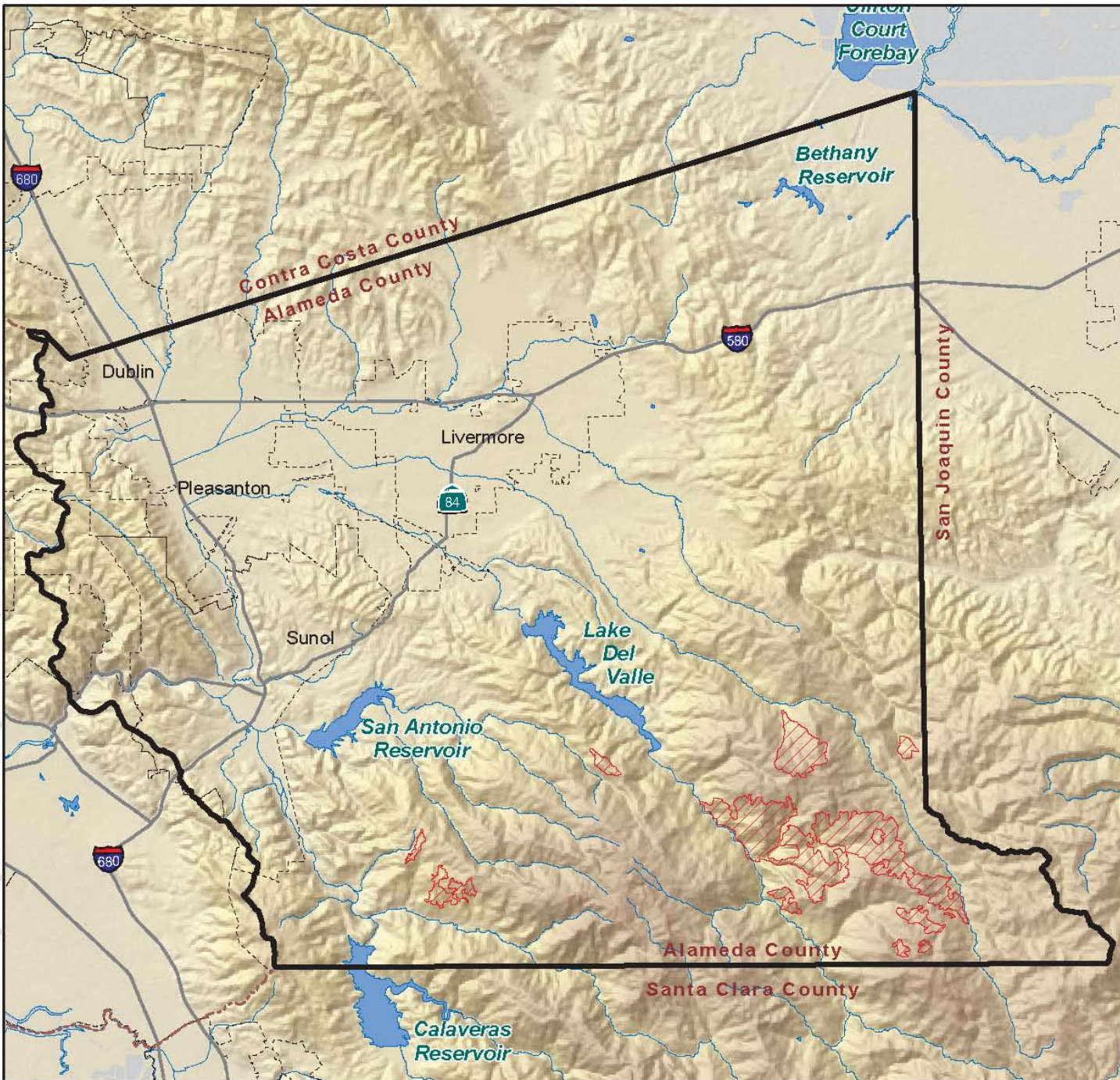
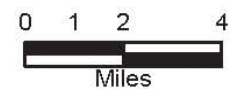
- Sharsmith's onion
- Mt. Hamilton fountain thistle
- Santa Clara red ribbons
- Talus fritillary
- Hairless popcorn-flower
- Saline clover

Eastern Alameda County Conservation Strategy

Serpentine Soils

-  Study Area Boundary
-  Serpentine Soils
-  County Line
-  Highways
-  City Limits
-  Lake
-  Streams

**WORKING
DRAFT**



S:\GIS\PROJECTS\ZONE 7\000029.DT\MAPDOC\STUDYAREA_SERPSSOILS.MXD (05-01-08)



Updates



Updates

- Land cover map
- Land use map
- Protected lands map
- Focal species occurrences and distribution



Questions?