

# East Alameda County Regional Conservation Strategy: A Blueprint for Action



Users Advisory Group  
April 3, 2008

## Meeting Objectives

- Discuss UAG ground rules
- Receive feedback on focal species list
- Discuss regional conservation plans adjacent to the EACCS study area
- Future meeting topics
- Future meeting schedule



## Focal Species



## Focal Species

- What are focal species
  - Why is it necessary to focus on species
  - How will they be treated in the strategy
  - What are the benefits
- Species selection process
  - Selection criteria
  - Other criteria that were considered
- Draft focal species list



## A Focal Species...

- Is likely rare and often protected
- Could serve as an indicator for the health of the habitat where it lives
- Could serve as an indicator for the population health of other native species
- Could be used to answer regional conservation questions (i.e., habitat connectivity)
- Extends conservation benefits to several other native species and natural communities



## Why Species?

- Most biological issues that arise through the CEQA process are species related
- ESA and CESA are regulations that focus on species
- Although mitigation occurs at the natural community level it is usually prescribed based on the needs of species



## Focal Species

- For planning purposes only
- No Permits are issued as the result of this strategy
- Focal species habitat will be defined based on accepted knowledge about their natural history and occurrence
- That habitat will be treated as a resource in the strategy just like other unique resources that often require mitigation or need to be protected



## Benefits

- Gain some certainty about how and where focal species will be impacted in the future
- Gain a better understanding of where mitigation could occur for habitat loss should it be needed
- Give local jurisdictions and project proponents some certainty about what species will be impacted by projects in different areas
- Give the wildlife agencies and local conservation groups some certainty about long-term protection of species

## Species Selection Process

- Selection Criteria
  - Range – is the species in the study area
  - Status – is the species sufficiently rare
  - Threats – what are they and can they be mitigated
  - Data Available – is the species well understood
- Other Criteria
  - Are there conservation opportunities
  - Are there accepted mitigation practices for the species
  - Is the species included in other conservation plans in the region

## Draft Focal Species List

- 2 invertebrates
- 2 amphibians
- 1 reptile
- 3 birds
- 2 mammals
- 6 plants

## Invertebrates

- Vernal pool fairy shrimp (FT)
- Longhorn fairy shrimp (FE)



Longhorn fairy shrimp



Vernal pool fairy shrimp

## Amphibians and Reptiles

- Alameda whipsnake (ST, FT)
- California red-legged frog (CSC, FT)
- California tiger salamander (CSC, FT)



Alameda whipsnake



California red-legged frog



California tiger salamander

## Birds

- Golden eagle (BGPA, CSC)
- Western burrowing owl (CSC)
- Tricolored blackbird (CSC)



Tricolored blackbird



Golden eagle



Western burrowing owl

## Mammals

- American badger (CSC)
- San Joaquin kit fox (FE, ST)



American badger



San Joaquin kit fox

## Plants

- San Joaquin spearscale (CNPS 1B.2)
- Big tarplant (CNPS 1B.1)
- Congdon's tarplant (CNPS 1B.1)
- Palmate-bracted bird's beak (SE, FE, CNPS 1B.1)
- Livermore Valley tarplant (CNPS 1B.1)
- Recurved larkspur (CNPS 1B.2)



Big tarplant



Palmate-bracted bird's beak



San Joaquin spearscale



Recurved larkspur



Congdon's tarplant



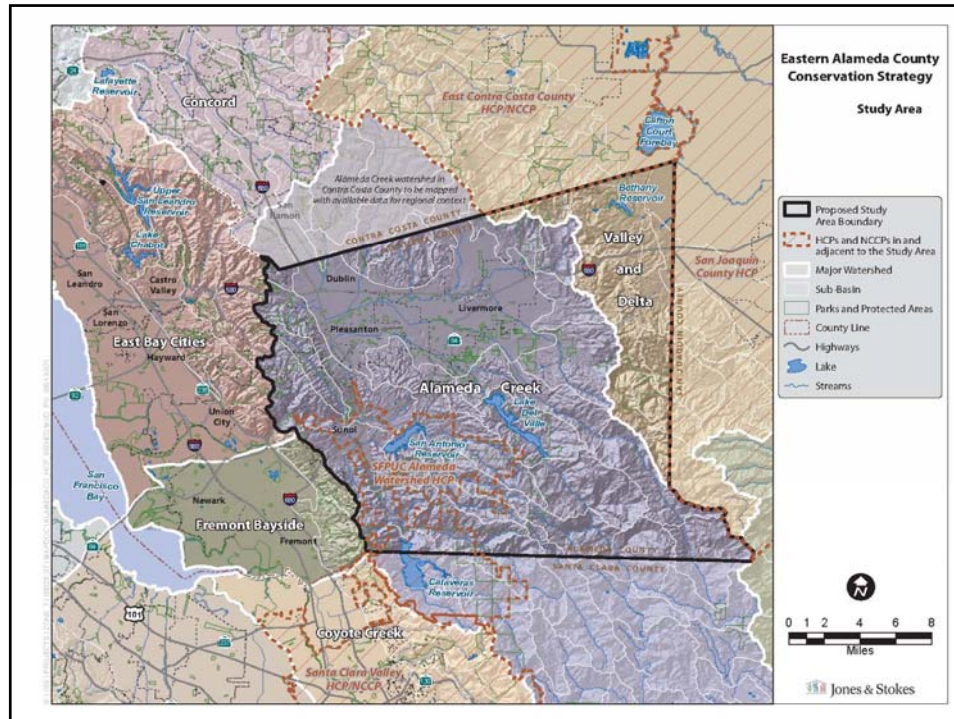


## Questions and Comments



## Nearby Regional Conservation Plans

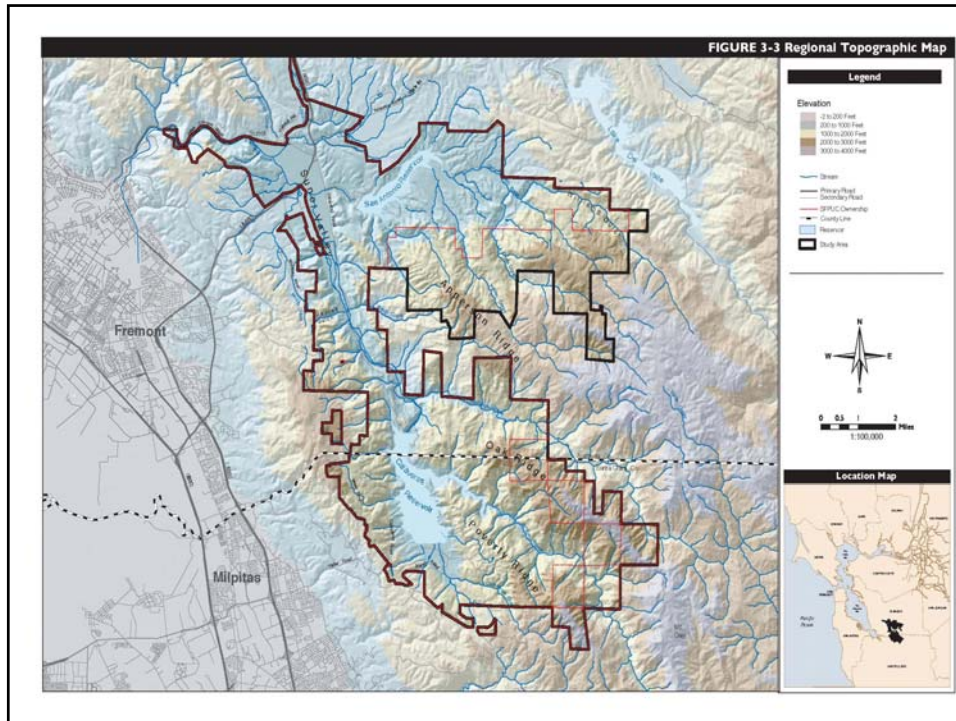
- San Francisco Public Utilities Commission Alameda Watershed HCP
- East Contra Costa County HCP/NCCP
- San Joaquin County Multi-species Habitat Conservation and Open Space Plan
- Santa Clara Valley HCP/NCCP



## SFPUC Alameda Watershed HCP

- Covers SFPUC lands in the Alameda Watershed
  - ~ 47,800-acre acre study area
- Is an operations and maintenance HCP
- Public draft expected out at the end of 2009
- 19 covered species
- 7 plants, 3 fish, 3 amphibians, 2 reptiles, 2 birds, 1 mammals and 1 invertebrate

<http://www.sfwater.org>



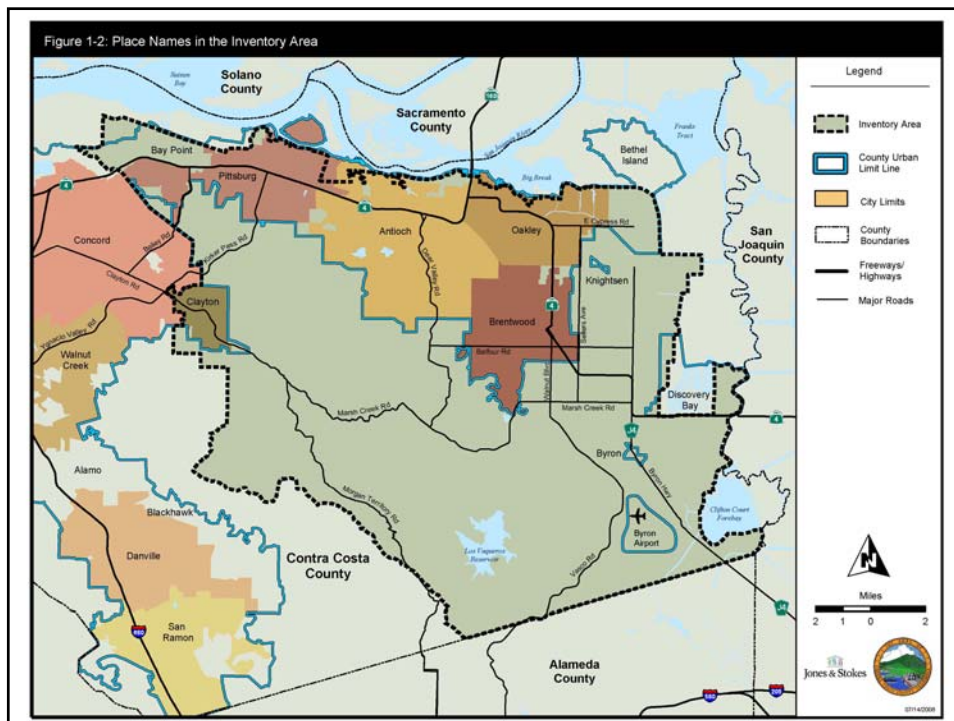
## Species in Common with EACCS

- California red-legged frog
- California tiger salamander
- Alameda whipsnake
- Tricolored blackbird
- Burrowing owl

## East Contra Costa HCP/NCCP

- Covers eastern Contra Costa County
  - ~174,018 acre inventory area
- Planning partners include: the cities of Brentwood, Clayton, Oakley and Pittsburg, Contra Costa County, Contra Costa Water District and the East Bay Regional Park District
- Plan was approved in summer 2007
- 28 covered species
- 11 plants, 0 fish, 3 amphibians, 4 reptiles, 4 birds, 2 mammals and 4 invertebrates

<http://www.cocohcp.org>

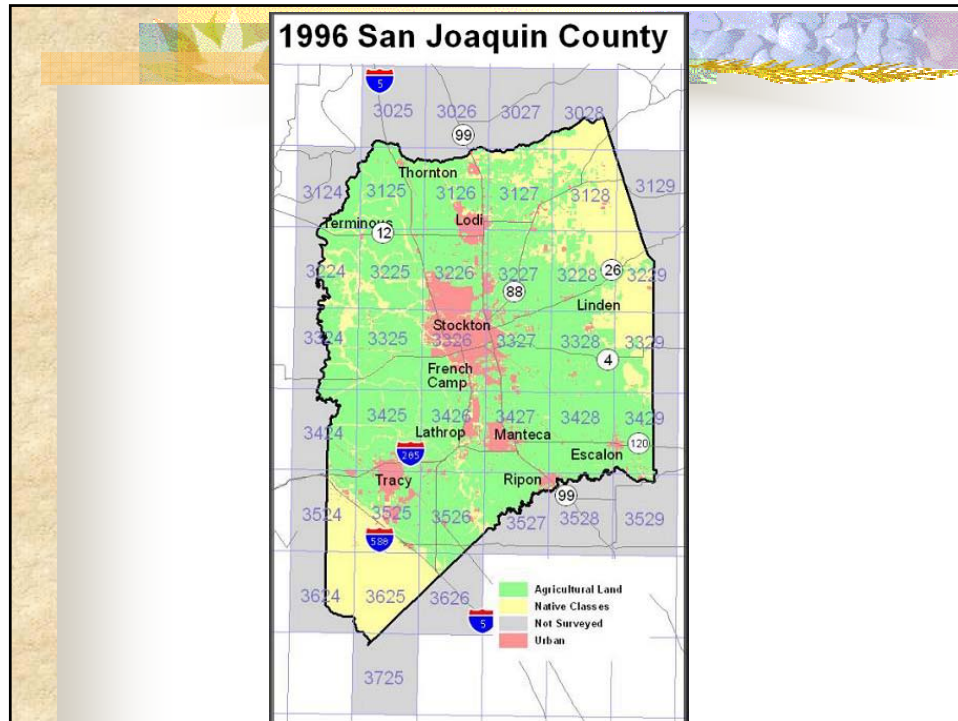


## Species in Common with EACCS

- San Joaquin spearscale
- Big tarplant
- Recurved larkspur
- Longhorn fairy shrimp
- Vernal pool fairy shrimp
- California red-legged frog
- California tiger salamander
- Alameda whipsnake
- Golden eagle
- Tricolored blackbird
- Burrowing owl
- San Joaquin kit fox

## San Joaquin MSCP

- Covers nearly all of San Joaquin County
    - ~900,000 acres
  - Plan was approved in 2000
  - 97 covered species included, though coverage varies
  - 27 plants, 4 fish, 4 amphibians, 4 reptiles, 33 birds, 15 mammals and 10 invertebrates
- <http://www.sjcog.org>



## Species in Common with EACCS

- Recurved larkspur
- Longhorn fairy shrimp
- Vernal pool fairy shrimp
- California red-legged frog
- California tiger salamander
- Golden eagle
- Tricolored blackbird
- Burrowing owl
- American badger
- San Joaquin kit fox

# Santa Clara Valley HCP/NCCP

- Covers 2/3 of Santa Clara County
  - ~520,000 acres
- Planning partners include: the Cities of Gilroy, Morgan Hill, and San Jose, Santa Clara County, Santa Clara Valley Water District, Valley Transportation Authority, California State Parks
- Plan is in progress, expected approval winter 2009-10
- 30 covered species
- 15 plants, 4 fish, 3 amphibians, 1 reptiles, 4 birds, 2 mammals and 1 invertebrate

<http://www.scv-habitatplan.org>

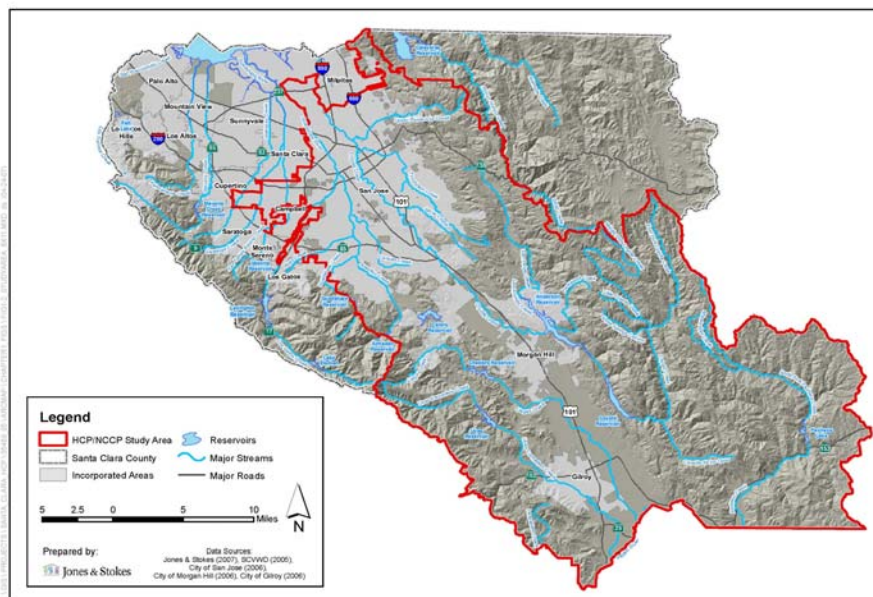


Figure 1-2  
Santa Clara Valley HCP/NCCP Study Area



## Species in Common with EACCS

- California red-legged frog
- California tiger salamander
- Golden eagle
- Tricolored blackbird
- Burrowing owl
- San Joaquin kit fox



## Take Home...

- Conservation Planning is well established in the region
- A lot can be learned from overlap in planning efforts
- EACCS closes the “gap” in regional information that is now available
- Allows Alameda County to keep conservation in the county





## Questions or Comments



## Upcoming meeting topics

- Santa Rosa Plain Conservation Strategy
- Ongoing conservation on private lands in Alameda County
- Update on the Upland Habitat Goals Project
- Others...?

## Next Steps

- Steering Committee will...
  - Finalize land cover classification
  - Finalize focal species list
  - Continue to update protected lands map
- Upcoming materials for UAG
  - Draft Land Use classification
  - Draft focal species occurrence figures
  - Draft land cover map
- Date of next meeting

## Contacts:

- Weblink:  
[www.fws.gov/sacramento/eaccs/eaccs.htm](http://www.fws.gov/sacramento/eaccs/eaccs.htm)
- Mary Lim, EACCS Coordinator  
[m\\_lim@zone7water.com](mailto:m_lim@zone7water.com)  
925-454-5036
- Troy Rahmig, Jones and Stokes  
[t\\_rahmig@jsanet.com](mailto:t_rahmig@jsanet.com)  
408-434-2244