

# East Alameda County Regional Conservation Strategy: A Blueprint for Action



Users Advisory Group  
April 16, 2009

## Outline

- Chapter 1 – Questions/comments
- Chapter 2 – Physical and Biological Resources
- Project Schedule May-June
- Update On Other Conservation Plans
- Public Comment



## Chapter 1- Comments/Responses

1. Measure D discussion should be in Chapter 1 rather than Chapter.
2. Discussion of relevant Assembly Bills should be included in Chapter 1.
3. There should be some guidelines around the activities that are described in the Programmatic Biological Opinion so that there is not blanket streamlining of projects in sensitive areas.
4. A hypothetical project should be included to demonstrate how it would move through and be influenced by the EACCS document.



## Chapter 1- Comments/Responses

1. Focal species list should include:
  1. Species that represent all land cover types shown in the land cover figure including serpentine habitats and annual grasslands in all parts of the study area.
  2. Focal species list should include Prairie Falcon
2. Should include guidance for western burrowing owl in urban settings and should coordinate with Bill Boarman (Statewide Conservation Strategy for Burrowing Owl).
3. Others?

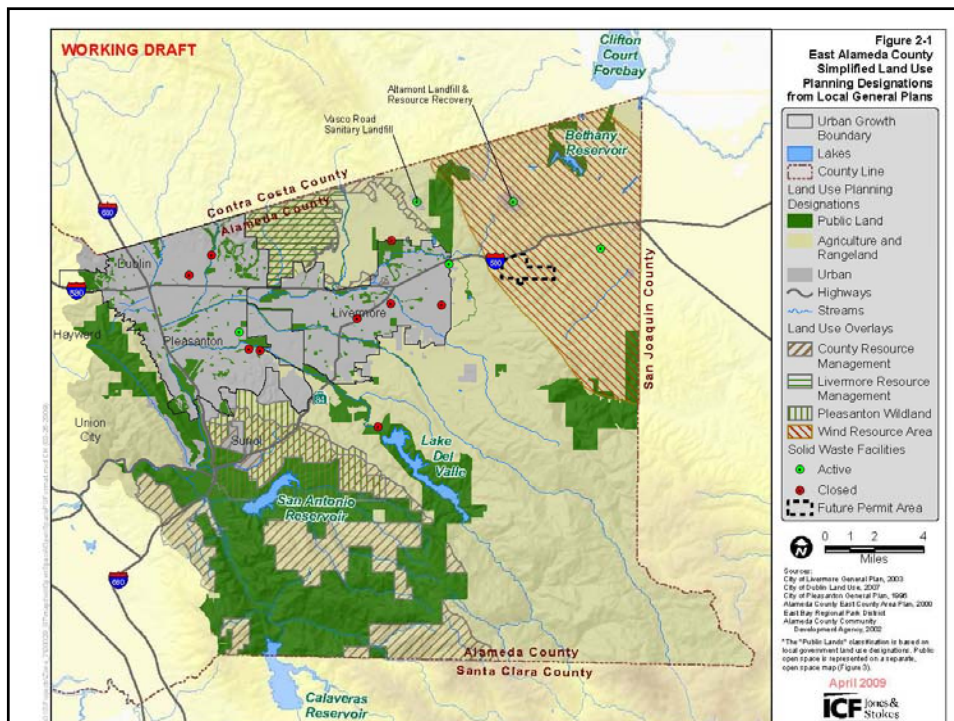
## Chapter 2 – Physical and Environmental Resources

### ■ Land Use

- Existing Conditions – (discussion of land use)
- Land Use Categories
  - Methodologies for Land Use Map (Figure 2-1)
  - Land Use Categories Crosswalk (Table 2-1)

### ■ Land Use Controls

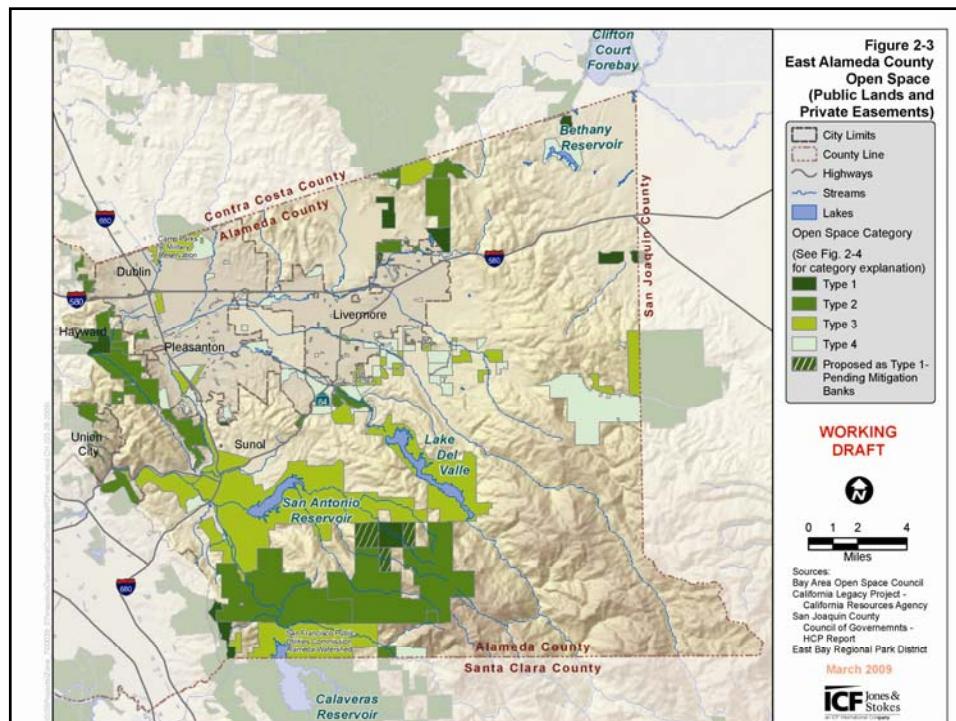
- Boundaries to Urban Growth
- Measure D – Alameda County



## Chapter 2 – Physical and Environmental Resources

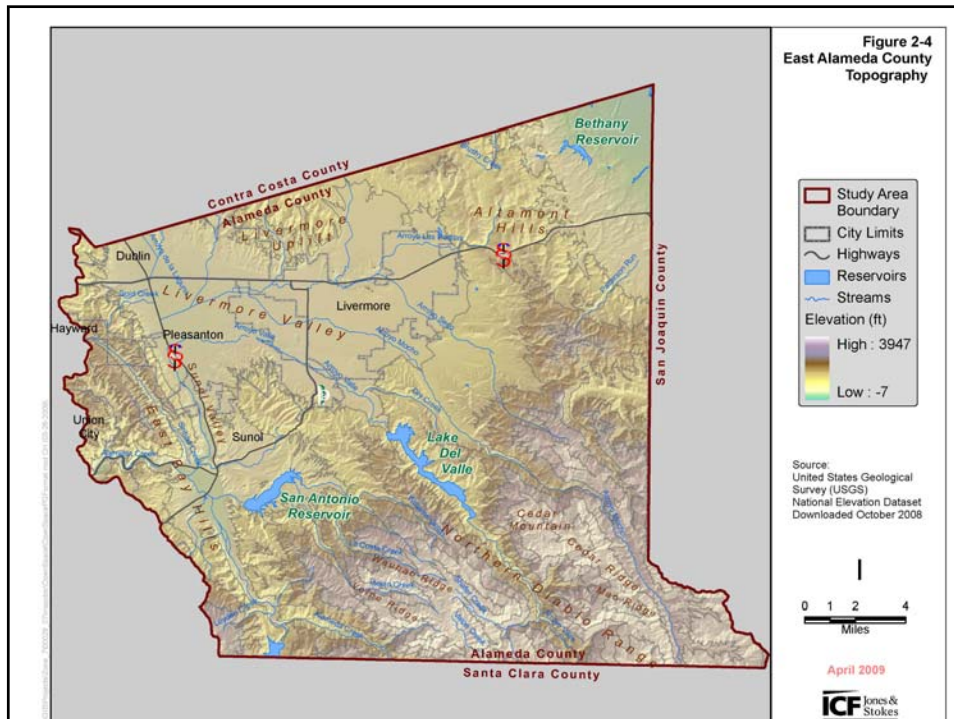
### ■ Protected Open Space & Parkland

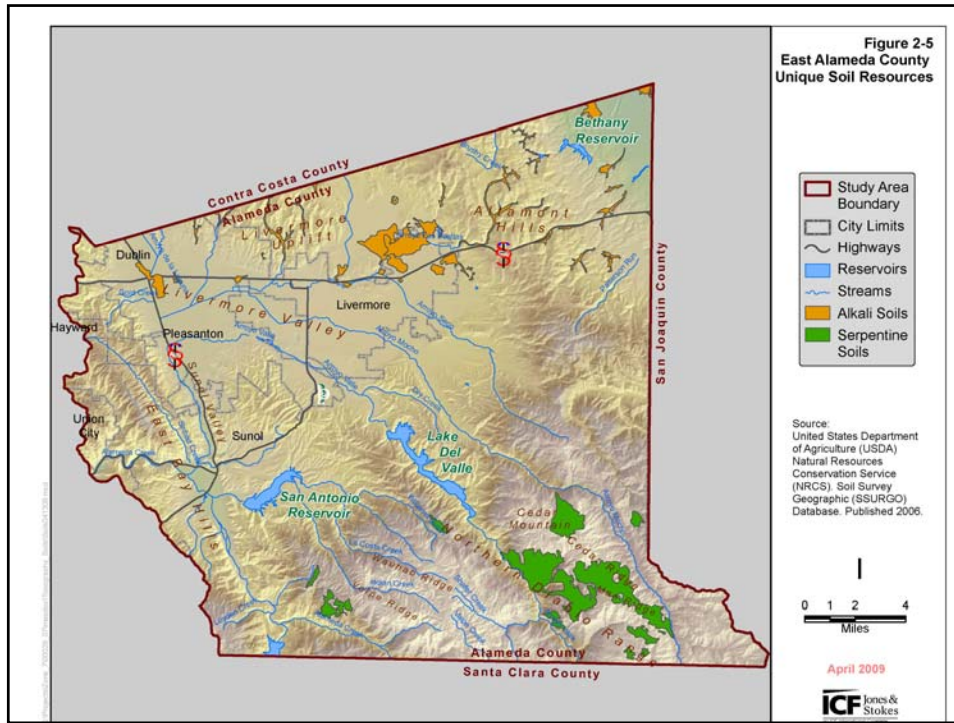
- Existing Conditions
  - Types of Open Space (Figure 2-2)
  - Protected Open Space and Parkland Map (Figure 2-3)
- Protected Open Space and Parkland Agencies
  - East Bay Regional Park District
  - Livermore Area Parks and Recreation District
  - Tri Valley Conservancy
  - San Francisco Public Utility Commission
  - California State Parks
  - Lawrence Livermore National Laboratories



## Physical Setting

- Location
- Topography (Figure 2-4)
- Geology Soils (Figure 2-5)
- Hydrology





## Ecosystems, Natural Communities, and Land Cover


### ■ Land Cover Mapping

- Data Sources
- Land Cover Classification (Table 2-2)
- Mapping Procedures
- Accuracy Assessment
- Land Cover Map (Figure 2-6)



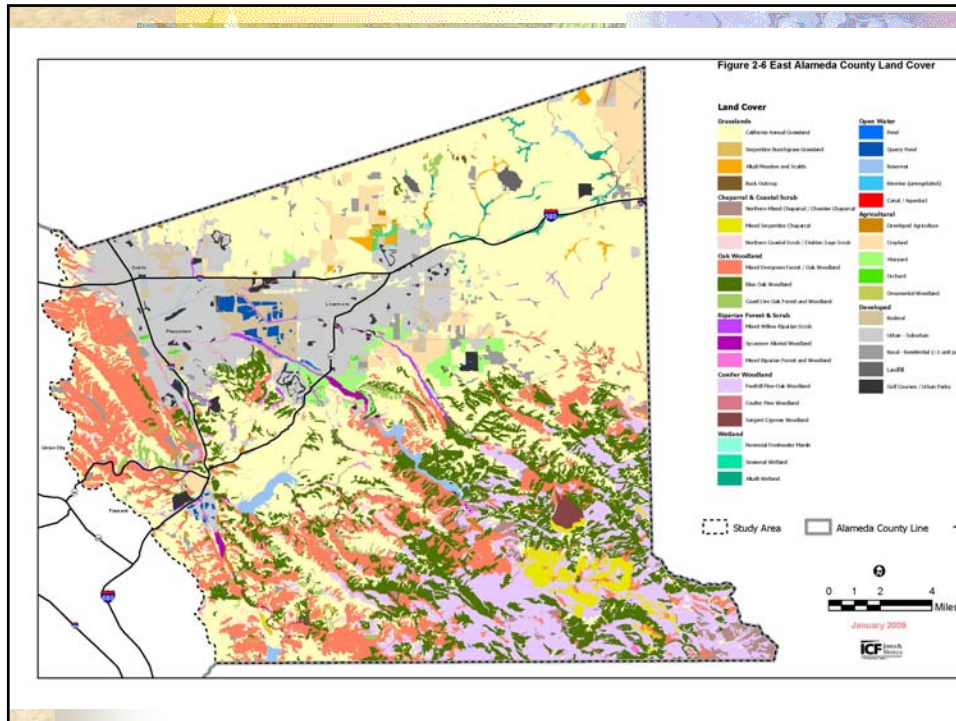
## Ecosystems, Natural Communities, and Land Cover

- Focal Species
  - Ecology and Distribution
  - Distribution of Potential Habitat
    - Species Habitat Model Methodology
    - Occurrence Data Assessment
    - Habitat Model Limitations
- Biological Diversity of the Study Area



## Ecosystems, Natural Communities, and Land Cover

- Natural Communities and Land Cover
  - Grassland
  - Chaparral and coastal scrub
  - Oak Woodland
  - Conifer Woodland
  - Riparian Forest and Scrub
  - Wetland
  - Open water
  - Cultivated agriculture
  - Developed



## Ecosystems, Natural Communities, and Land Cover

### ■ Grassland

#### ■ Land Cover Types and Extent in Study Area

- California annual grassland.
- Non-serpentine native bunchgrass grassland.
- Serpentine bunchgrass grassland.
- Alkali meadow (including alkali scalds).
- Valley sink scrub
- Rock outcrop.

#### ■ Ecosystem Function





## Appendix D – Species Accounts

- San Joaquin spearscale
  - Distribution
    - Occurrences in Study Area
  - Ecology
  - Threats
  - Modeled Habitat
    - Model Assumptions
    - Model Results
    - Figure D-1, etc.



## Project Schedule

## Project Schedule

- Steering Committee Meeting – May 5<sup>th</sup>
- Chapter 2 release – May 8<sup>th</sup>
- Technical Working Groups –
  - Weeks of May 11<sup>th</sup> and 18<sup>th</sup>
- Steering Committee Meeting - June 2<sup>nd</sup>
- UAG meetings in May and June?
  - May 21<sup>st</sup> and June 18<sup>th</sup>
- Public Meeting – June 11<sup>th</sup>

## Proposed Workshop Dates

- Grasslands and Chaparral and Coastal Scrub –  
**May 12<sup>th</sup> ; 1:00 – 5:00.**
- Ponds and Wetlands; **May 14<sup>th</sup> ; 8:00 – 12:00.**
- Riparian Forest and Scrub, Oak and Conifer  
Woodland; **May 19<sup>th</sup> ; 8:00 – 12:00.**

## Public Meeting

- June 11, 2009 – 7:00 - 9:00pm
- Dublin Regional Meeting Room
- Format
  - Open House at the beginning with stations that highlight project work products
  - 30-45 minute presentation about project background and progress.
  - 30 minutes for questions/discussion

## Other Conservation Plans

## East Contra Costa County HCP/NCCP

- Approved 2007-2008
- Continuing to work on a Regional Wetland Permit for Section 404 compliance.
- Developing a project tracking database.
- Completed two conservation projects to date:
  - Lentzner: a 0.015 acre alkali wetland near Antioch adjacent to Black Diamond Mines Regional Park.
  - Vasco Caves: a 1.09 acre seasonal pond southwest of Byron.
  - Have others that are in the acquisition/design phase in the Byron Area.
- <http://www.cocohcp.org>

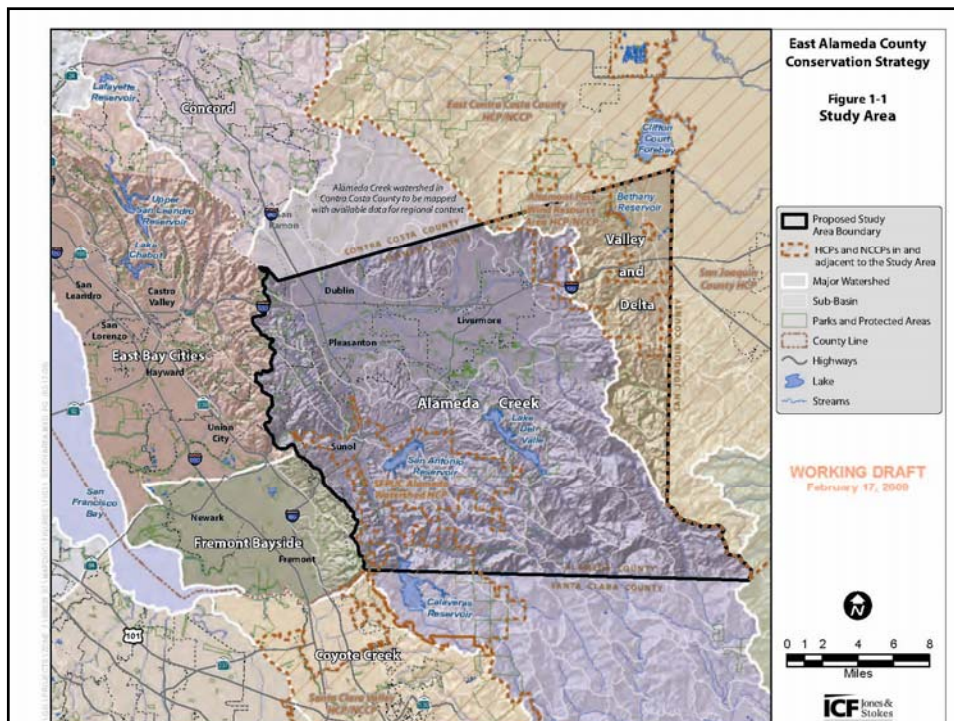
## San Joaquin County MSCP

- Multi-species Habitat Conservation and Open Space Plan
- Approved/Adopted 2001
- Annual Reporting
  - Conversions (Development)
  - Conservation (Preserves)
  - Funding
  - Implementation (Overall)

## Accomplishments in 2008

Several “Preserve Enhancement Projects” as required in the Plan, were implemented

- This included riparian plantings and expansion of existing wetlands associated with irrigation water detention ponds.
- Three preserve enhancement projects were conducted in conjunction with the SLEWS Program, a program in which local High School students participate in ground preparation and Kee Wetlands and Habitat Restoration Project” was recently completed, a large tidally influenced wetland creation project adjacent to the White Slough Wildlife Area (formerly known as Caldoni Marsh), with great potential for providing a large block of contiguous habitat for the giant garter snake.





## Santa Barbara County Conservation Strategy

- Initiated in 2007 to streamline permitting related to California tiger salamander.
- Focused on conversions to vineyards as well as development.
- Had a facilitated stakeholder process.
- Had some grant funding from the USFWS that was never spent by the County.
- Strategy was discontinued in Fall 2008.
- Website:  
[http://longrange.sbcountyplanning.org/programs/regionalconservationstrategy/reg\\_cons\\_strategy.php](http://longrange.sbcountyplanning.org/programs/regionalconservationstrategy/reg_cons_strategy.php)



## Next meeting

- Tentative agenda
  - Summary of comments on Chapter 2
  - Debrief from Technical workshops
  - Debrief from Public Meeting
  - Update on Santa Rosa Plain Conservation Strategy



## Public Comment



## Communications Tools

- Weblink: [www.eastalco.com](http://www.eastalco.com)
- EACCS Coordinator  
Mary Lim  
[mlim@zone7water.com](mailto:mlim@zone7water.com)  
925-454-5036